

Gollapudi, An only Well- Established
Residential Hub Nearest to **Amaravati**

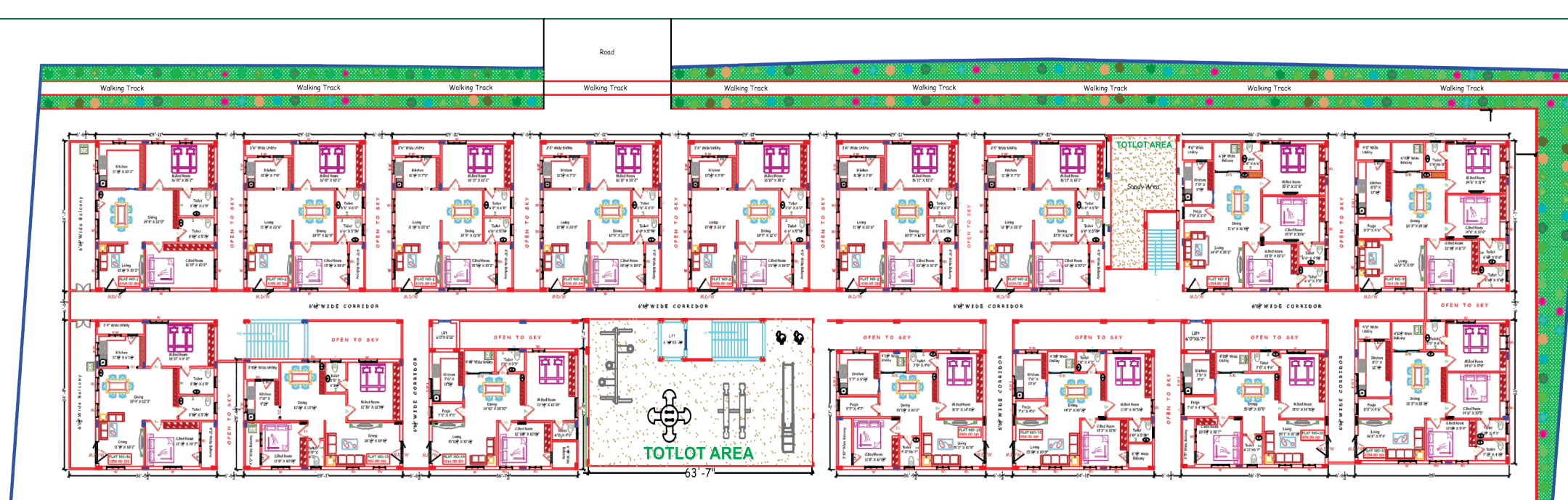
RERA Registration No : P06160075251

MILLENNIUM MURALI

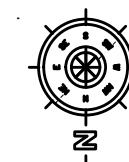
Just 5 Minutes to Amaravati @ doorstep of
Andhra Pradesh's State Capital Via West bypass, Vijayawada



Contact Details: Email - Sales@millenniumprojects.in
Mob - 9849016390, 8333000325
Website: www.millenniumprojects.in



Main Gate



Typical Floor Plan

Unmatched Connectivity

Enjoy proximity to the Vijayawada West By pass, whichse amlessly connects Amaravatl, Guntur , and Gannavaram, Vijayawada Airport, ensuring smooth travel to key destinations.

Prime Residential Location

Situated in Gollapudi , a well - established bustling residential area, this project offers excellent infrastructure, with schools, hospitals, shopping centers, and recreational facilities just minutes away.

RERA , Vaastu and CRDA Compliance

Developed on around 1 acre land with CRDA regulations in a single lengthy block with Unmatched privacy as there are no opposite blocks or flats

Specifications of the Construction

Technical Specifications including Details of Fittings & Fixtures.

ITEM	MATERIAL PROPOSED TO USE	BRAND/ MAKE DETAILS
Details of Foundations	Structure with RCC Columns beams and structural Design Suggested by Licensed structural Engineer	Suggested by Licensed structural Engineer
Details of Super Structure	Brick wall with Country Bricks and plastered bothsides12mm Thickness, main wall 9 inches, partionwall 4.5 inches	Brick wall with Country BricksBricks and plastered both sideswith 12 mm Thickness, main wall 9 inches, partion wall4.5 inches
Cement	53 / 43 Grade	53/43 Grade of ACC, Zuari or Equivalent
Steel	Steel – DIIL TMT Steel 550D	Steel – DIIL TMT Steel 550D or Equivalent
Plastering	Internal and external Sponge Finish Plastering	Internal and external Sponge Finish Plastering
Doors	Main doors Teak Wood doors, remaining Country wood and Bathroom Door Frames with Wpc	Main doors Teak Wood doors, remaining Country wood and Bathroom Door Frames with Wpc
Windows	UPVC windows with sliding and Mosquito Proofing	Wintech or equivalent
Flooring	600mmX1200mm	Vitrified Tiles of Vivera/ Johnson brand
Details of Painting	Asian Paints and Nerolac	Painting – Asian, Nerolac or equivalent
Cupboards	RCC Planks	RCC Planks
Kitchen	Granite Kitchen platform and SS Sink	Prestige or equivalent Sink
Common Areas: Parking Area details, Parking area Flooring, Corridors, Lift, Stair case, Sump, Water Tanks, Borewell, Head Rooms, Terrace Floor.	All rooms and balconies with vitrified tiles (2*2) and staircase with the tiles with matching skirting and parking space parking Tiles and terrace with cement flooring. Staircase with SS railing and granite flooring and tile raiser	Johnson, Vivera or Equivalent Borewell with submersible Texmo Pump
ELECTRIFICATION		
Wiring	Concealed PVC pipes and copper wiring with adequate points	Wiring – Goldmedal/ Havells
Switches& others if any		Havells / Goldmedal
BATHROOMS		
Sanitary ware	Glazed ceramic tiles up to 7 feet and best quality sanitary fittings.	Vivera / Cera /Johnson
Drainage pipelines	2.5 inch for wastewater,4 inch for rain water and lavatory 5/6 inch for underground	Sudhakar Pipes and fittings
Water supply pipelines, Plumbing& Fittings	Internal – ¾ inch, 1 inch, 1/4 inch External – 1 ½ inch Overhead Tank Connection – 2 inch	Finolex or Equivalent Pipes and fittings
Flooring: Rooms, Bath Rooms, Wall tiles,	2"*4" tiles for flooring for kitchen, hall, dining and bed rooms, 2"X2" antiskid tiles for wash areas, bathrooms and corridors	Vivera
OTHER AMENITIES		
Lift	6 passenger lift - 3 No.s	Johnson or Equivalent
Generator	62 KVA Generator	Kirloskar/Eicher/Equivalent